

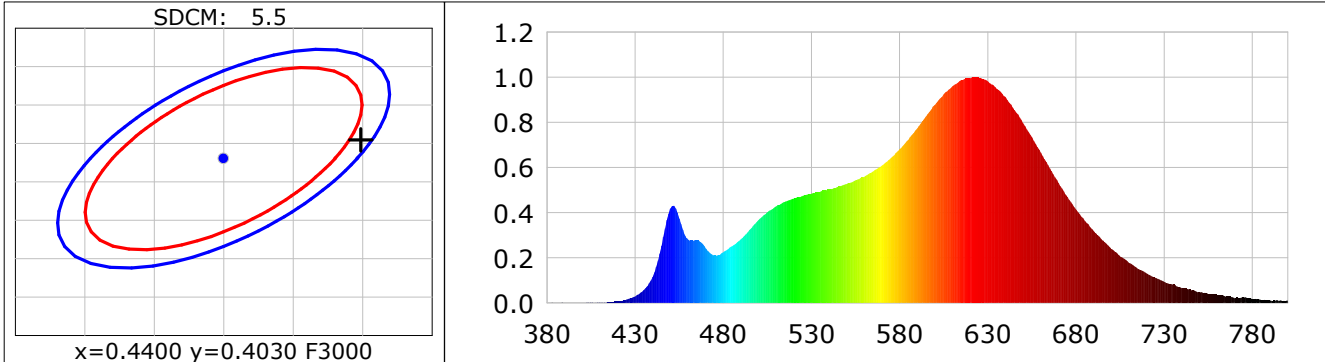
Lightsource Test Report

Product Infomation

Product Category: LED STRIP	Product Type: LED STRIP
Product Spec: WILD 7	Product Number: 717
Manufacturer: TECSOLEED S.L.	Buyer: TECSOLEED S.L.

CIE Colorimetric Parameters

Chromaticity coordinates: $x=0.4499$ $y=0.4054$ $u(u')=0.2584$ $v=0.3492$ $v'=0.5239$
 CCT: $T_c=2804K$ ($duv=-0.00102$) Color Ratio: $R=0.266$ $G=0.705$ $B=0.030$
 Peak Wavelength: 621.9nm Half Bandwidth: 134.0nm
 Dominant Wavelength: 603.4nm Color Purity: 0.568
 CRI: $R_a=95.0$, $avgR(1\sim14)=93.4$, $avgR(1\sim15)=93.3$ TM30: $R_f=93$, $R_g=99$
 GAI: $GAI_BB_8=101.9$, $GAI_BB_15=107.1$, $GAI_EES=52.7$
 R1 =98 R2 =99 R3 =97 R4 =99 R5 =99 R6 =93 R7 =90 R8 =84
 R9 =67 R10=98 R11=96 R12=88 R13=100 R14=99 R15=93
 Color Quality Scale: $Q_a=93.6$, $Q_f=95.2$, $Q_p=96.3$, $Q_g=96.6$
 Q1 =89 Q2 =94 Q3 =95 Q4 =96 Q5 =97 Q6 =98 Q7 =97 Q8 =96
 Q9 =96 Q10=98 Q11=98 Q12=97 Q13=95 Q14=89 Q15=89



Photometric Parameters

Luminous Flux: 816.77 lm	Efficiency: 84.58 lm/W	Radiant Power: 2.797 W
Total mains efficacy: 78.32 lm/W	Energy Efficiency Class: G (EU 2019/2015)	

Electric Parameters

Voltage: 24.000V	Current: 0.4024A	Power: 9.66W
Power Factor: 1.0000	Frequency: 0.00Hz	

Test Infomation

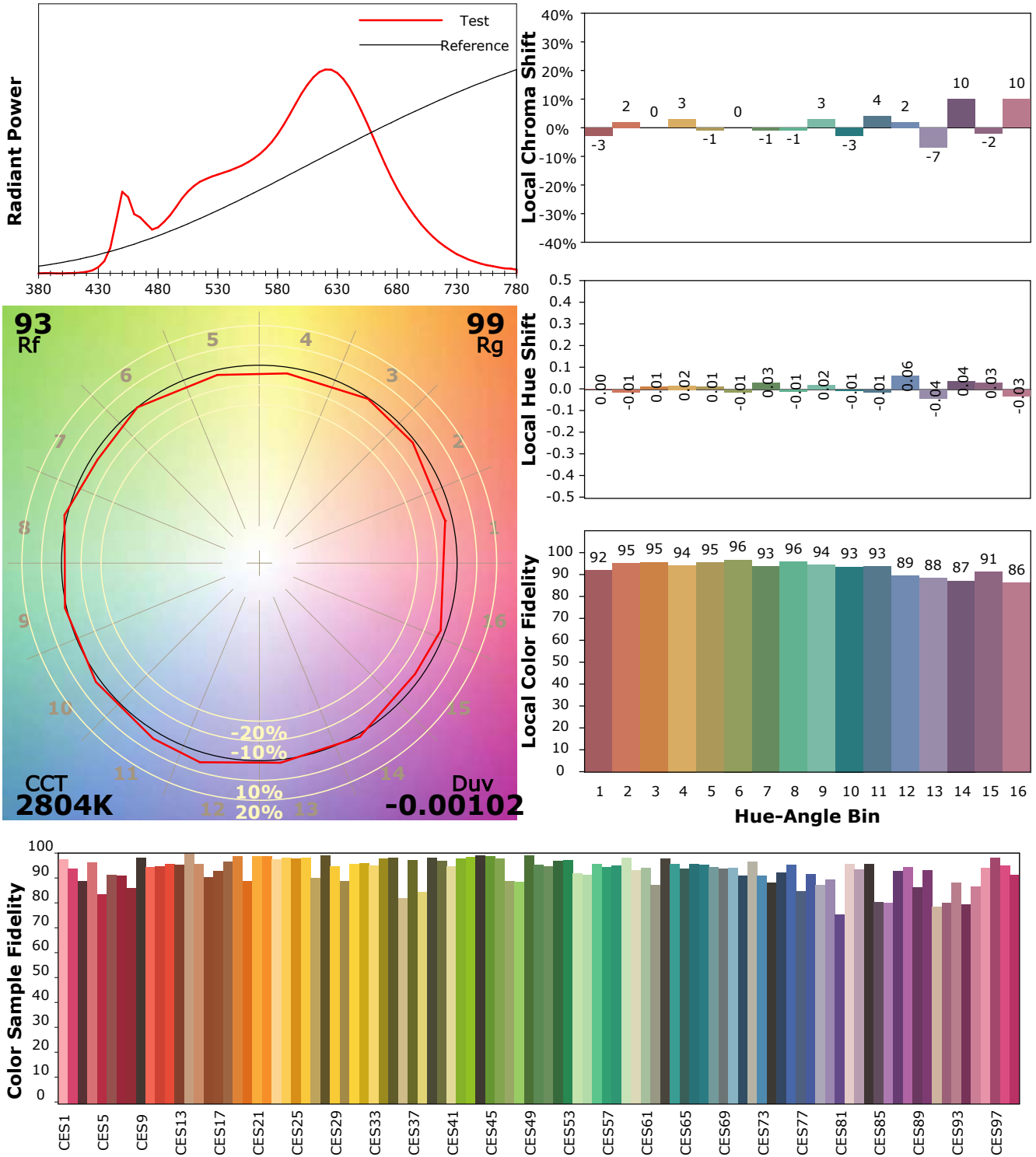
Scan Range: 380~800:1nm	Photometric Method: sphere-spectroradiometer
Stabilization Time: 30 Sec ALC.: 1.0000	Photometric Condition: Sphere diameter: 1.50m, 4PI
Max of Signal: 47764 (2222)	CCD Integration Time: 833.57 ms

IES TM-30-18 Color Rendition Report

Product Information

Product Category: LED STRIP
 Product Spec: wild 7
 Manufacturer: TECSOLED S.L.

Product Type: LED STRIP
 Product Number: 717
 Buyer: TECSOLED S.L.



Condition: Tx:19.1'C, Ti:17.5'C, R.H.:60%
 Test Lab: TECSOLED S.L.
 Operator: JORDAN GIL DIAZ

Test Device: Inventfine CMS-2S (Plus)
 Test Time: 2022-01-03 12:50:48
 Inspector: